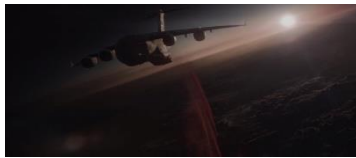


Marq Faulkner

Lighting TD

MARQFX.COM • MARQFX@GMAIL.COM • 604.440.1526

Shot 1: Godzilla



Lit and rendered CG C-17 jet, halo jumpers, and flares.
[Katana](#) / [PRman](#) / [Nuke](#)

Shot 2: Tomorrowland



Lit and rendered CG flying vehicles, monorail stairs, and folding glass window.
[Katana](#) / [PRman](#) / [Nuke](#)

Shot 3: Godzilla



Lit and rendered CG Godzilla and dripping water.
[Katana](#) / [PRman](#) / [Nuke](#)

Shot 4: The Amazing Spider-Man



Lit and rendered CG buildings and steam.
[Katana](#) / [PRman](#) / [Nuke](#)

Shot 5: Man of Steel



Lit and rendered CG armour and smoke elements.
[Maya](#) / [PRman](#) / [Nuke](#)

Shot 6: Man of Steel



Lit and rendered CG armour and smoke elements.
[Maya](#) / [PRman](#) / [Nuke](#)

Shot 7: Avengers: Age of Ultron



Lit and rendered CG Hulk, Ironman, Quicksilver, Captain America's shield, and robots.
[Katana](#) / [PRman](#) / [Nuke](#)

Marq Faulkner

Lighting TD

MARQFX.COM • MARQFX@GMAIL.COM • 604.440.1526

Shot 8: Avengers: Age of Ultron



Lit and rendered CG Ultron.
[Katana](#) / [PRman](#) / [Nuke](#)

Shot 9: Angry Birds: The Movie



Lit, rendered, and composited all elements.
[Katana](#) / [Arnold](#) / [Nuke](#)

Shot 10: The Secret Life of Walter Mitty



Look-developed CG taxi cab. Lit and rendered CG taxi cab, dust, debris, and fractured pavement.
[Maya](#) / [PRman](#) / [Nuke](#)

Shot 11: The Secret Life of Walter Mitty



Look-developed CG taxi cab. Lit and rendered CG taxi cabs, hero digi-doubles, concrete slab, dust, debris, and fractured pavement.
[Maya](#) / [PRman](#) / [Nuke](#)

Shot 12: Godzilla



Lit and rendered CG Godzilla, boats, missiles, missile trails, ocean, and Golden Gate Bridge extension.
[Katana](#) / [PRman](#) / [Nuke](#)

Shot 13: Tomorrowland



Lit and rendered CG robots and digi-double
[Katana](#) / [PRman](#) / [Nuke](#)

Shot 14: Into The Storm



Lit and rendered CG tornado elements, dust, debris, and street lamp.
[Maya](#) / [PRman](#) / [Nuke](#)

Marq Faulkner

Lighting TD

MARQFX.COM • MARQFX@GMAIL.COM • 604.440.1526

Shot 15: Godzilla



Lit and rendered CG Godzilla.
[Katana](#) / [PRman](#) / [Nuke](#)

Shot 16: Happy Feet Two



Lit, rendered, and composited all elements.
[Houdini](#) / [3Delight](#) / [Nuke](#)

Shot 17: Man of Steel



Lit and rendered CG helicopter, cars, dust, debris, and fractured pavement.
[Maya](#) / [PRman](#) / [Nuke](#)

Shot 18: Man of Steel



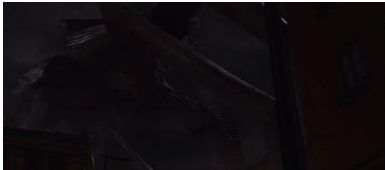
Lit and rendered CG character, U-Haul truck, and helicopters.
[Maya](#) / [PRman](#) / [Nuke](#)

Shot 19: Storks



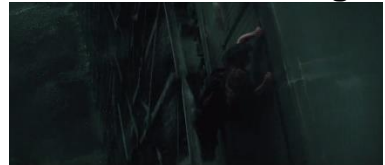
Lit, rendered, and composited all elements.
[Katana](#) / [Arnold](#) / [Nuke](#)

Shot 20: Godzilla



Lit and rendered CG Muto Monster, dust, and debris elements.
[Katana](#) / [PRman](#) / [Nuke](#)

Shot 21: The Lone Ranger



Lit and rendered CG bridge, debris, and train smoke.
[Maya](#) / [PRman](#) / [Nuke](#)

Marq Faulkner

Lighting TD

MARQFX.COM • MARQFX@GMAIL.COM • 604.440.1526

Shot 22: Godzilla



Lit and rendered CG Godzilla, Golden Gate Bridge, cars, missiles, missile trails, dust, debris, and explosion elements.

[Katana](#) / [PRman](#) / [Nuke](#)

Shot 23: Godzilla



Lit and rendered CG Godzilla, Muto monster, city buildings, and atmos elements.

[Katana](#) / [PRman](#) / [Nuke](#)